

# THE LAUREL

West Palm Beach

## Residence 04

1 Bedroom, 1 Bathroom

Level 2

### RESIDENT AMENITIES

38,000+ square feet of resort-style indoor/outdoor amenities

- Outdoor pool deck with plush lounges, private cabanas, hot and cold plunge pools, and treatment cabanas with massage beds
- Outdoor bar and lounge with BBQ pods
- Expansive co-working space with private conference rooms, private offices, and coffee bar
- State-of-the-art private fitness center
- Private indoor/outdoor fitness studio and pilates studio
- Golf simulator
- Game room and lounge
- Screening room with oversized TV
- Women and men's spas with steam rooms and saunas
- Private dining room with demonstration kitchen, BOH kitchen, and outdoor dining
- Children's playroom
- Dog wash room
- Bicycle storage
- Guest suites

### RESIDENCE FEATURES

- Open kitchens featuring custom Italian cabinetry with polished chrome hardware, quartz countertops, and Carrara Marble tile backsplash
- Top-of-the-line Bosch and Fisher Paykel appliances
- Five-inch wide plank LVT flooring throughout
- Soaring floor-to-ceiling windows and up to nine-foot ceilings in living spaces
- Samsung stacked washer/dryers
- Salto keyless entry system
- Private balconies\*
- Solar shades in living room and blackout roller shades in bedrooms
- Luxe bathrooms feature custom Italian vanity with expansive storage, custom sconces, and quartz countertops
- Primary bathrooms feature double sinks and glass enclosed walk-in shower

### BENEFITS & SERVICES

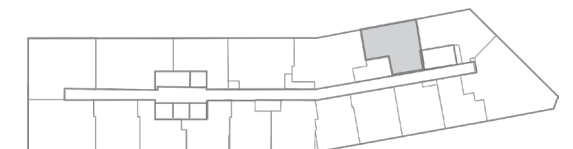
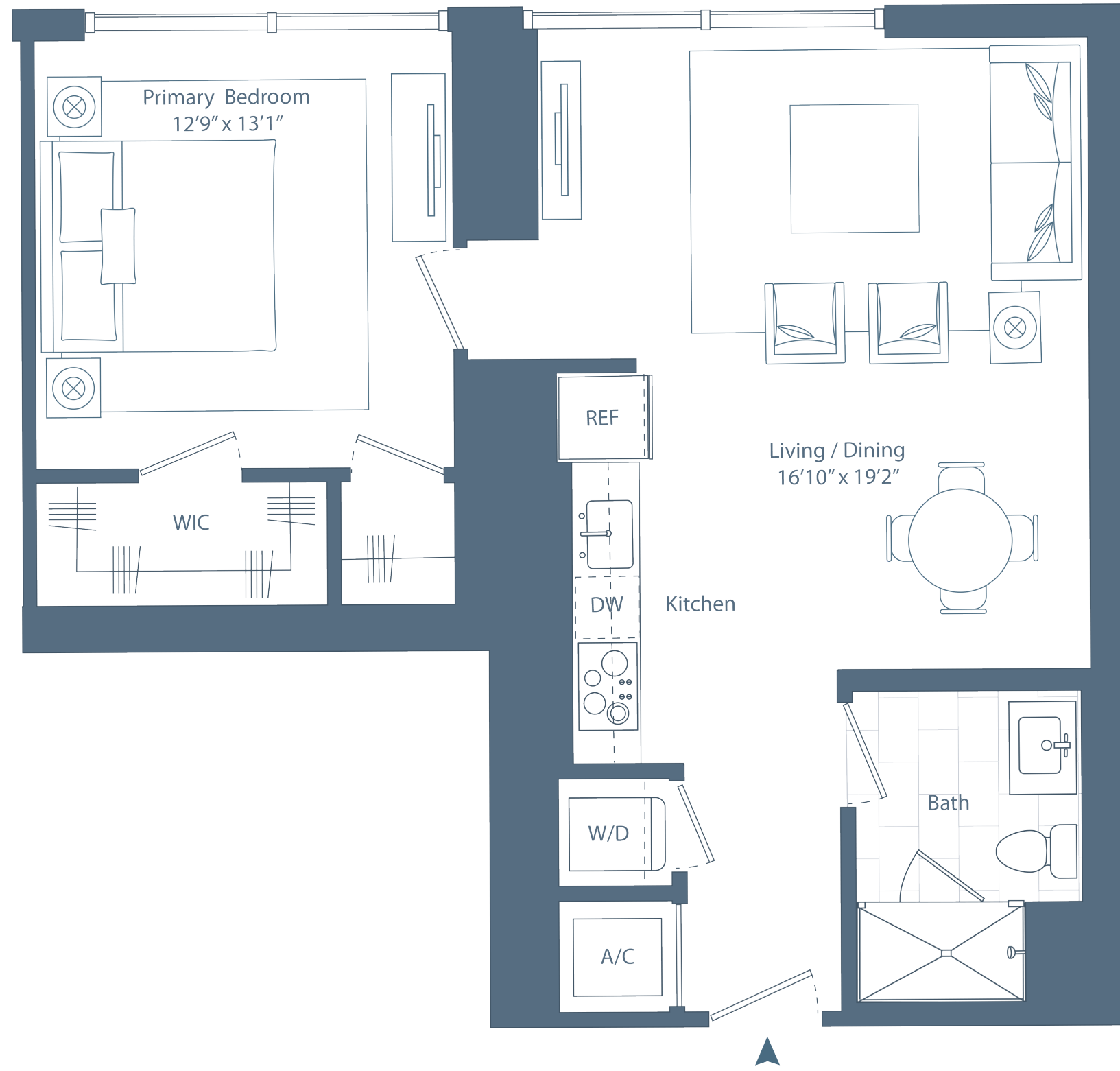
- 24-hour attended lobby
- Onsite parking with electric vehicle charging stations
- Access to Related Life exclusive benefits and programming
- Complimentary Wi-Fi in all common spaces
- Package delivery room with automated package lockers and refrigerated storage
- Smoke-free building
- Anticipated Florida Green Building Coalition Gold sustainability rating

TheLaurelWPB.com

Leasing Office: 561.491.0014

635 Hibiscus Street

West Palm Beach, FL 33401



\*Balconies on select floorplans only. This floor plan is intended for illustrative purposes only. Dimensions and square footages are approximate and variations in the layout shown may occur. Additional charges may apply to building services, benefits and amenities. Benefits and services are subject to change and are not an essential, required or ancillary service provided by the landlord. All features and specifications are subject to change. Copyright 2023 Related. Related does not discriminate against race, color, sex, religion, national origin, familial status or disability. Equal Housing Opportunity.