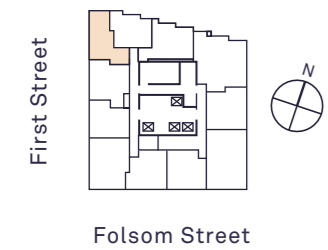


# Residence 2007-3107 Residence 3203

1 Bedroom, 1 Bathroom



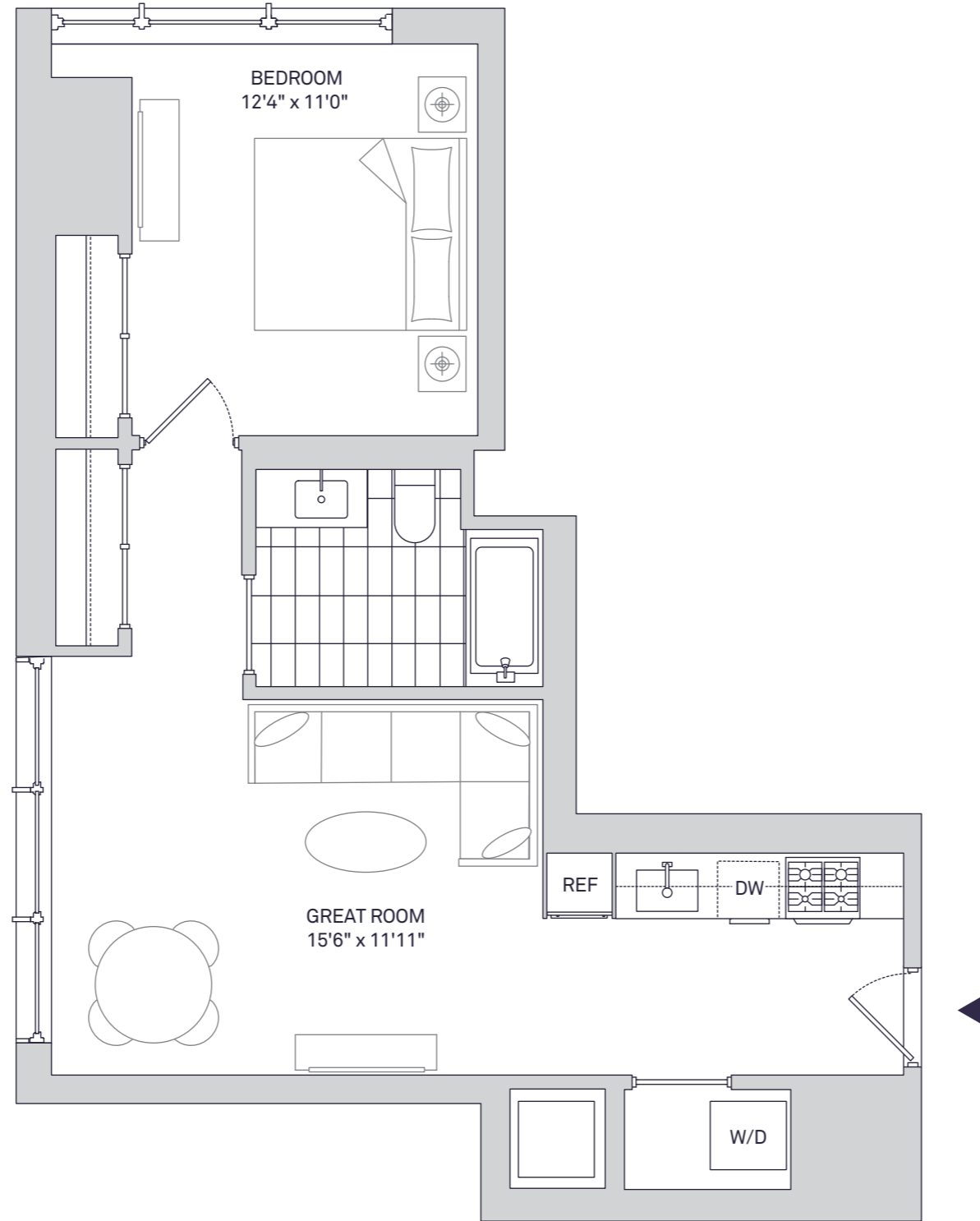
Notes

---



---

Floor plans are not drawn to scale. All dimensions are approximate. Additional charges may apply to building services, benefits and amenities. Benefits and services are subject to change and are not an essential, required or ancillary service provided by the landlord. All features and specifications are subject to change. Copyright 2019 Related. Equal Housing Opportunity.



# AVERY 450

## Residence Features

- Floor-to-ceiling windows provide maximum natural light and views
- Wide-plank, white oak flooring throughout
- White quartz kitchen counters with a full-height Carrara marble tile backsplash
- Custom-designed walnut kitchen cabinetry
- Suite of premium Bosch appliances with integrated paneling
- Serene bathrooms feature a walnut vanity, white quartz counters, and a mirrored medicine cabinet
- Bathtub/shower combination with textured tiled tub surround
- Smart home technology includes Nest thermostats and Lutron lighting controls
- 9-foot ceilings\*
- Washer/dryer in every home

\*9-foot ceilings featured on residential floors 8-32

## Amenities & Services

- 24/7 attended lobby with concierge
- Equinox®-curated fitness center with yoga room and his/hers locker rooms with steam shower
- 60-foot lap pool
- Business and technology lounge with computers, printer, complimentary coffee, and private conference rooms
- Outdoor terrace and barbecue grills
- Media and game room with custom billiards table, TV, and bar
- Demonstration kitchen and chef's table
- 24/7 valet parking with electric vehicle charging stations
- Home manager and move-in coordination from *Life Simplified* by Related and Hello Alfred
- Residents-only on-demand car share program
- Complimentary wireless internet access in common areas
- Package delivery lockers

## Avery450.com

On-site Management and Leasing Office: 415-228-8910  
450 Folsom Street, San Francisco, CA 94105