

## APARTMENT FEATURES

- 9' ceilings with floor-to-ceiling, high performance windows featuring spectacular views of Lake Michigan, the Chicago River and the city skyline
- Custom designed wide-plank flooring throughout including bedrooms
- Gourmet kitchens including Snaidero high-gloss duotone cabinetry, stainless steel hardware, and polished quartz countertops with white marble mosaic tile backsplash
- Professional built-in stainless steel appliances including Kitchen Aid® Architect Series refrigerators with bottom freezer drawer with icemaker, gas ranges with stainless steel hood and paneled dishwashers
- Concealed microwaves and garbage disposals
- Polished natural stone bathrooms with walnut vanities, mirrored tri-view medicine cabinets and custom lighting
- Spacious customized closets with built-in organizers
- Full-size washer and dryer in every residence
- Resident-controlled year-round heating and air conditioning
- Solid-core wood interior doors

## PROPERTY FEATURES

- Majestic glass, wood and stone two-story lobby
- 500 Club featuring 27,000 square feet of indoor and outdoor amenities
- Lushly landscaped outdoor deck with pool, hot tub, fire pit, private cabanas, and kitchens with grills
- Reservable entertainment suite with catering kitchen and private terrace with grill
- Game room with billiards, poker table and shuffleboard
- Private screening room with dual televisions and wet bar
- Tech center featuring iMacs and multi-function printing
- Residents-only fitness center by Equinox®
- Full-service pet amenity by Dog City\*
- Bicycle room and resident storage\*
- 24-hour parking garage with on-site Zip Cars\*
- Package receiving and dry-cleaning services\*\*
- Distributed Antenna System for high-quality cell phone reception
- PORT Destination Elevator System technology for efficient elevator transit
- Keyless apartment entry system
- 24-hour attended lobby and maintenance services by Related Management
- Complimentary wireless Internet access in all common areas
- AT & T U-verse featuring premium channels and high speed wireless Internet
- RelatedStyle Services® including on-site Related Personal Assistant with hand-held move-in coordination, online rent payment, Related Inner Circle, Related Technology Concierge, and Partner Offer Program \*\*
- Committed to LEED certification and R-Earth™ Sustainability Program
- Related bike share\*
- 100% smoke-free environment

\* Additional charge

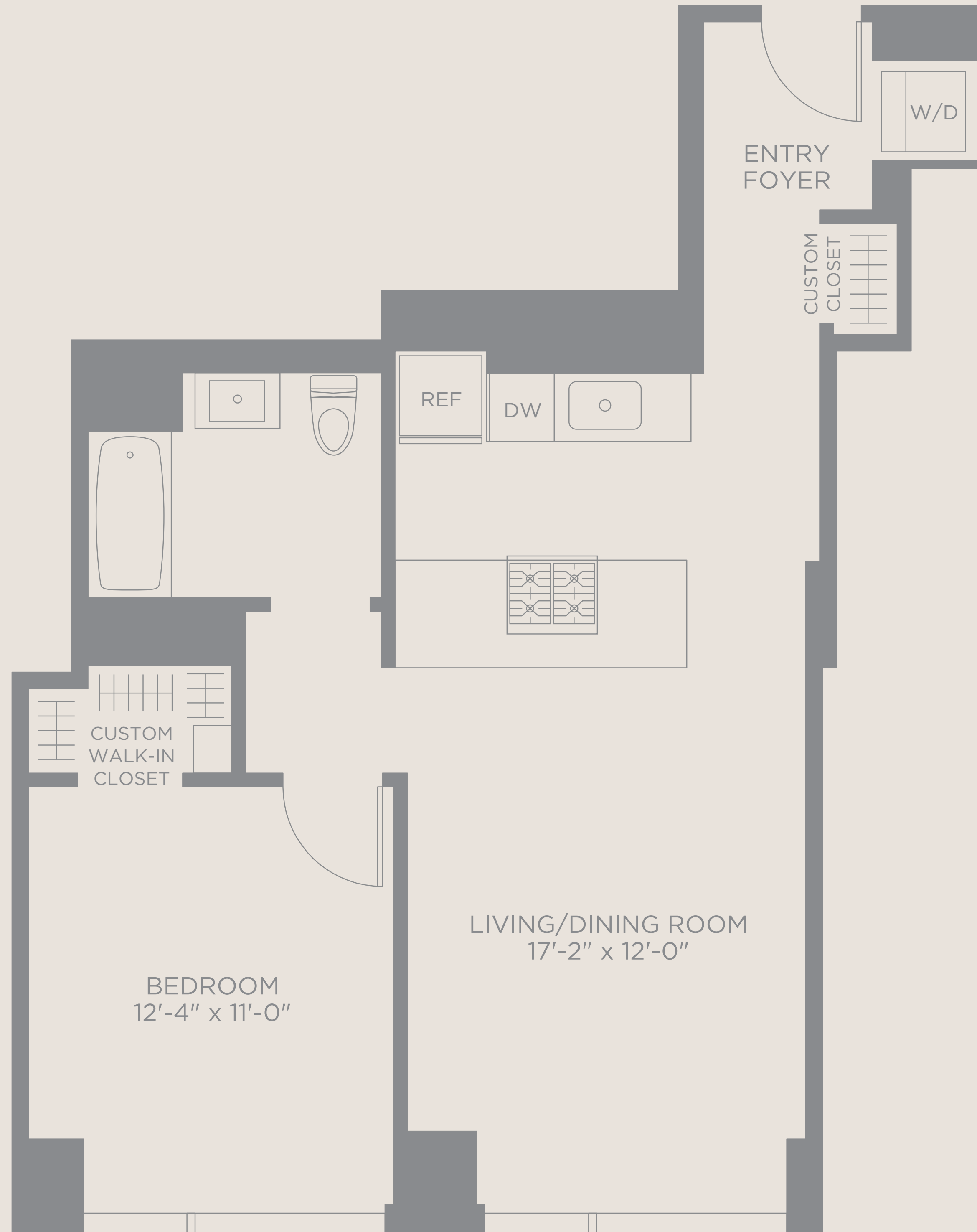
\*\* Additional charge for some services

## RESIDENT SERVICE AND LEASING CENTER

Tel | 312.850.0500  
LEASING@500LAKESHORE.COM  
500LAKESHORE.COM



Related Management Company, L.P.

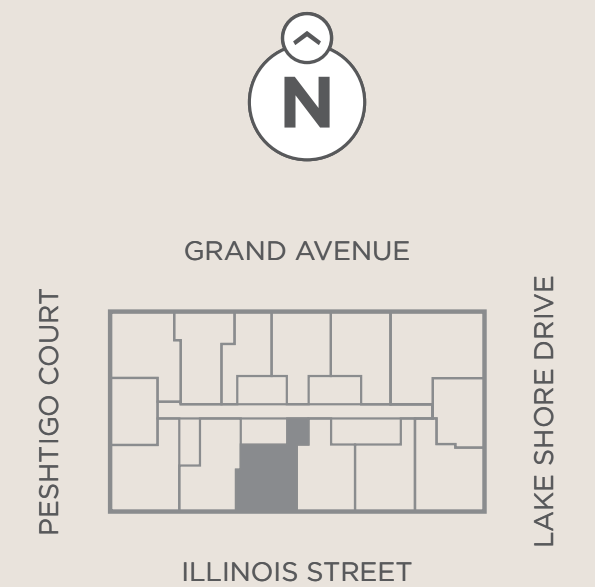


# 500 LAKE SHORE DRIVE

## RESIDENCE 06

FLOORS 14 - 43 | PH 1 - 3

1 BEDROOM  
1 BATHROOM



FLOOR |

MONTHLY RENT |

\* ALL DIMENSIONS ARE APPROXIMATE.  
PRICING SUBJECT TO CHANGE WITHOUT NOTICE.