

APARTMENT FEATURES

Apartment Features:

- Soaring 13' ceilings in all main living areas with spectacular views
- Custom designed walnut wide-plank flooring throughout including bedrooms
- Custom solar shades throughout
- LED recessed lighting with dimmers
- Solid-core doors throughout
- Spacious customized closets with built-in organizers
- Resident-controlled year-round heating and air conditioning
- Whirlpool Duet front-loading washer and dryer

YOUR GOURMET KITCHEN INCLUDES:

- Custom Snaidero dark ash cabinetry with high gloss uppers with stainless steel hardware
- Polished quartz countertops with white marble mosaic tile backsplash
- Professional appliances including:
 - Built-in SubZero refrigerator and beverage center
 - Wolf gas cooktop, oven and microwave
 - Whirlpool garbage disposal
 - Zephyr stainless steel hood
 - Kitchen Aid paneled dishwashers

YOUR CUSTOM BATHROOMS INCLUDE:

- Polished natural stone with mirrored tri-view medicine cabinets, custom designed lighting, and walnut vanities
- Spacious showers with frameless glass shower doors and rainheads (select residences)
- Kohler soaking tubs (select residences)
- Separate water closet in Master Bath (select residences)

PROPERTY FEATURES

- Majestic glass, wood and stone two-story lobby
- 500 Club featuring 27,000 square feet of indoor and outdoor amenities
- Lushly landscaped outdoor deck with pool, hot tub, fire pit, private cabanas, and kitchens with grills
- Reservable entertainment suite with catering kitchen and private terrace with grill
- Game room with billiards, poker table and shuffleboard
- Private screening room with dual televisions and wet bar
- Tech center featuring iMacs and multi-function printing
- Residents-only fitness center by Equinox®
- Full-service pet amenity by Dog City*
- Bicycle room and resident storage*
- 24-hour parking garage with on-site Zip Cars*
- Package receiving and dry-cleaning services**
- Distributed Antenna System for high-quality cell phone reception
- PORT Destination Elevator System technology for efficient elevator transit
- Keyless apartment entry system
- 24-hour attended lobby and maintenance services by Related Management
- Complimentary wireless Internet access in all common areas
- AT & T U-verse featuring premium channels and high speed wireless Internet
- RelatedStyle Services® including on-site Related Personal Assistant with hand-held move-in coordination, online rent payment, Related Inner Circle, Related Technology Concierge, and Partner Offer Program **
- Committed to LEED certification and R-Earth™ Sustainability Program
- Related bike share*
- 100% smoke-free environment

*Additional charge

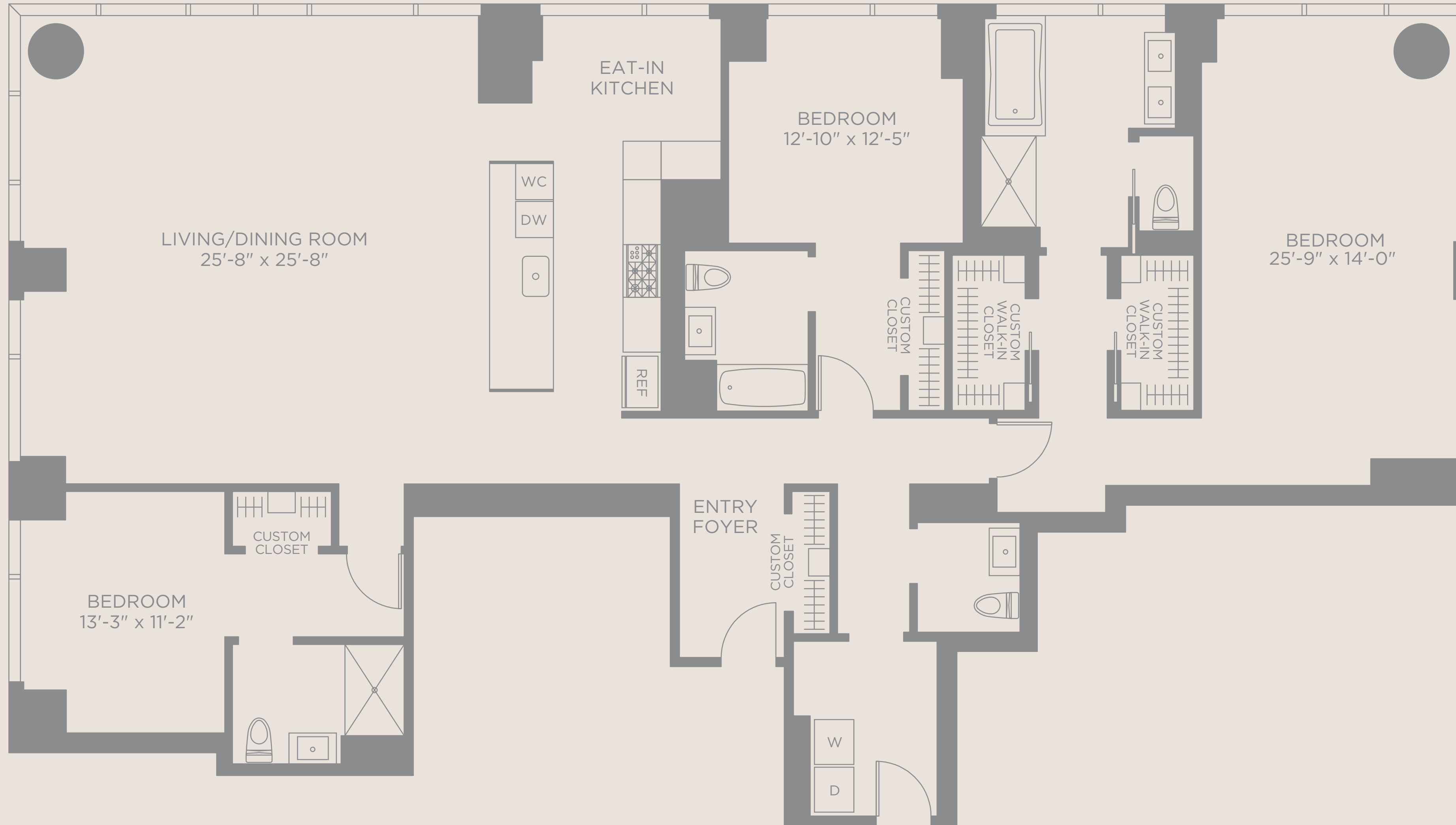
**Additional charge for some services

RESIDENT SERVICE AND LEASING CENTER

Tel | 312.850.0500
 LEASING@500LAKESHORE.COM
 500LAKESHORE.COM



Related Management Company, L.P.



500 LAKE SHORE DRIVE

PENTHOUSE 01

FLOOR 47 | PH 4

3 BEDROOM
 3.5 BATHROOM



FLOOR |

MONTHLY RENT |

* ALL DIMENSIONS ARE APPROXIMATE.
 PRICING SUBJECT TO CHANGE WITHOUT NOTICE.